

# Agilent GCMS Transferline tip seals

Agilent Customer Community  
06Aug2021



## What system do you have?

PAGE

5973A/N/Inert, 5975A/B/C/Inert

3

5977A Inert/Stainless  
Extractor  
CI

4

5977B Inert/Stainless  
Extractor  
HES  
CI

5

7000A/B Inert/Stainless  
Extractor  
CI

6

7000C/D Inert/Stainless  
Extractor  
CI

7

7010x Extractor  
HES  
CI

7

7000D/7010B Intuvo transferline

8

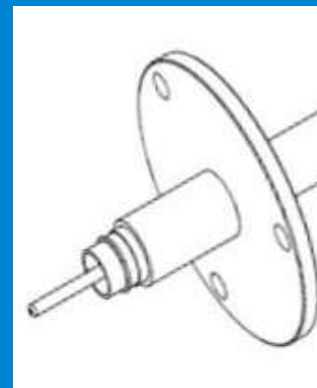
7200x RIS

9

7250x EI  
LE-EI

9

There are two basic types of transferlines\*



Captive – where the transferline tip is attached to the transferline



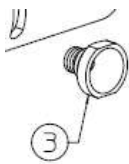
Non-Captive – where the transferline tip is loose



\* There are CI versions with the plumbing attached as well as these tip configurations.

5975A/B/C  
5973A/N

Stainless & Inert  
Stainless



EI SS Interface Socket      G1099-20136  
EI Vespel Interface Socket      G7000-20136

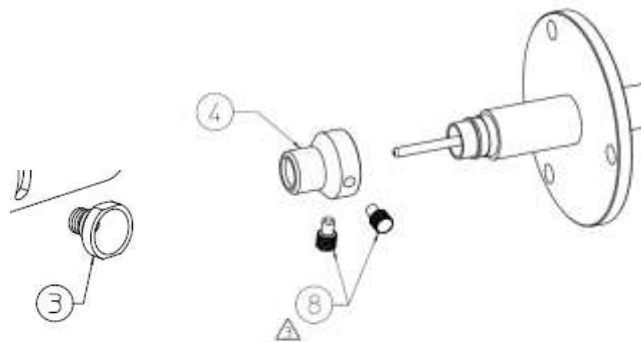
5975A/B/C      CI  
5973A/N      CI

Non-captive tip style



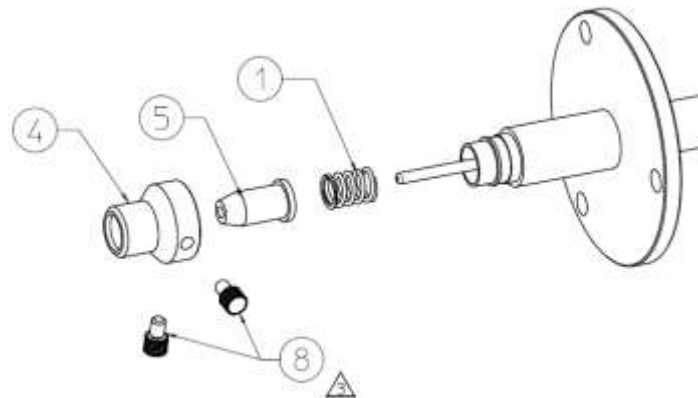
CI tip seal G1999-60412

5977A Inert/Stainless



- 3 Vespel Interface Socket G7000-20136
- 4 Transfer tip base G3870-20543
- 8 Knurled M3 screw (qty 2) G3870-20546
- 8 (M3 setscrew (qty 2) will also work 5181-3308)

5977A Extractor



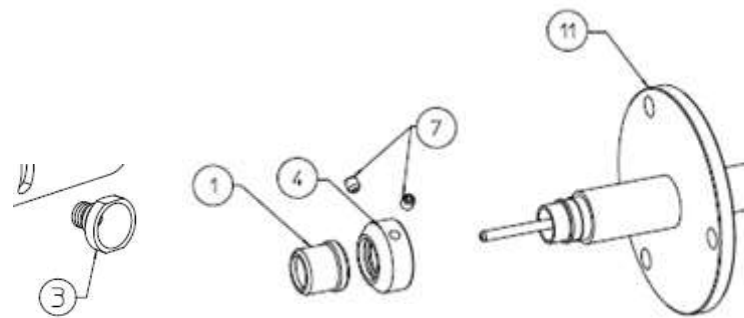
- 1 Spring G7005-20024
- 4 Transfer tip base G3870-20543
- 5 Xfer tip G3870-20542
- 8 Knurled M3 screw (qty 2) G3870-20546
- 8 (M3 setscrew (qty 2) will also work 5181-3308)

5977A CI



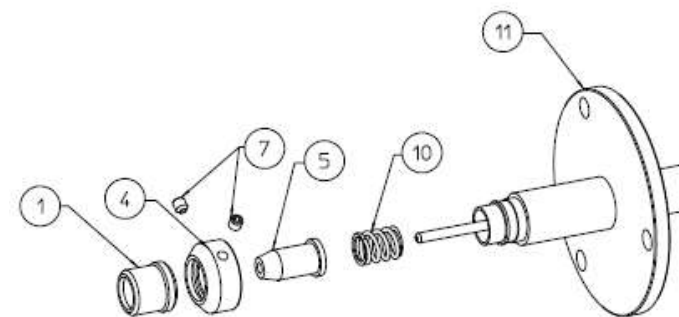
- CI tip seal G1999-60412

5977B Inert/Stainless



3	Vespel Transferline Socket	G7000-20136
1	Transfer tip cap	G3870-20547
4	Transfer tip base	G3870-20548
7	M3 setscrew (qty 2)	5181-3308

5977B Extractor  
HES  
CI  
Captive tip style

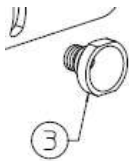


10	Spring	G1999-20023
1	Transfer tip cap	G3870-20547
4	Transfer tip base	G3870-20548
5	Xfer tip	G3870-20542
7	M3 setscrew (qty 2)	5181-3308



The 5977B spring is RoHS compliant. Its dimensions are identical to the 5977A spring.

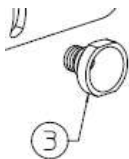
7000A Inert



EI VespeL Interface Socket  
No tip seal on the transferline

G7000-20136

7000B Extractor



EI VespeL Interface Socket  
No tip seal on the transferline

G1099-20136

7000B CI  
Non-captive tip style



CI tip seal G1999-60412

7000C Extractor  
CI - Non captive tip style

EI systems may have non-captive or captive transferline depending on the timing! The system would need a new transferline to use the new parts.

7000C w/CI transferline  
running either EI or CI

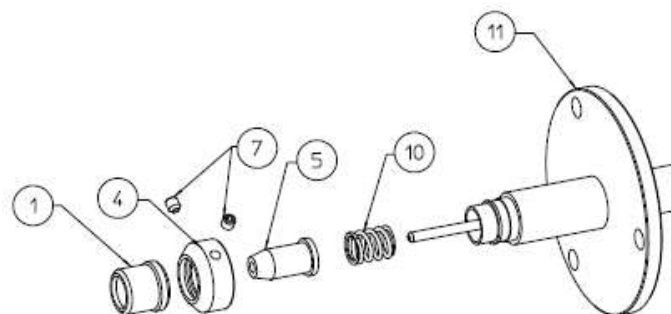
7010A w/CI transferline  
running either EI or CI  
Non captive tip style



CI tip seal G1999-60412

CI tip seal G7002-60412  
(non-magnetic spring required with HES)

7000C/D  
Extractor  
CI  
7010A/B  
HES  
CI (available field add-on)  
Captive tip style

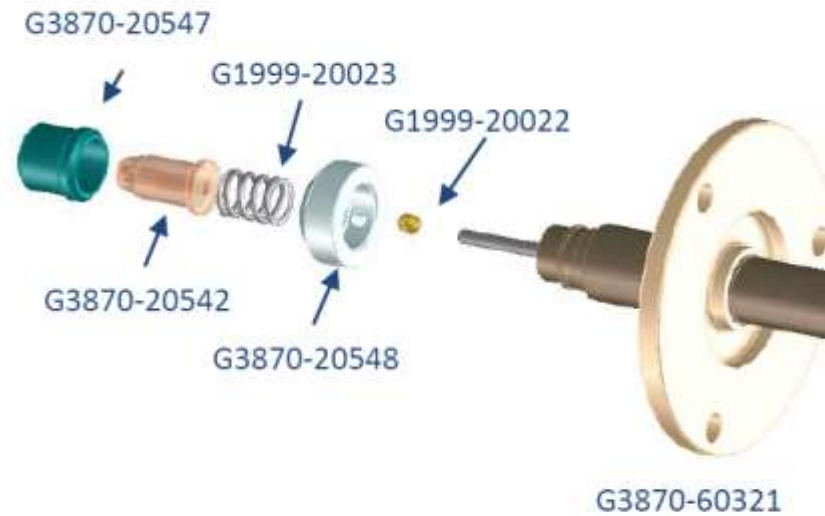


10	Spring	G1999-20023
1	Transfer tip cap	G3870-20547
4	Transfer tip base	G3870-20548
5	Xfer tip	G3870-20542
7	M3 setscrew (qty 2)	5181-3308

## Intuvo transferline

5975 Only install the G3870-20548 twist cap base and setscrew.

5977x/7000x/7010x. Check combination of Intuvo and MS with the software if applicable.



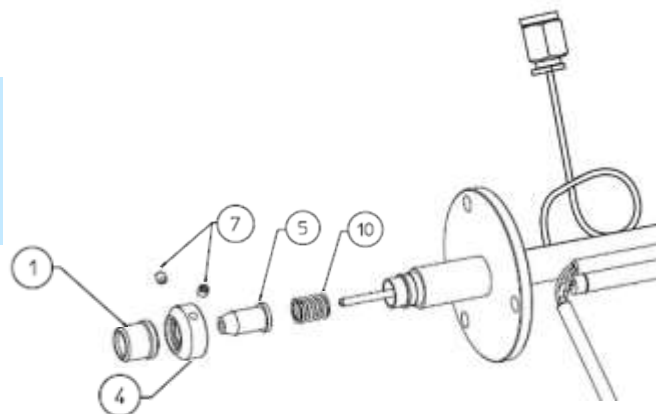


## 7200x RIS transferline



Transfer tip, RIS	G7005-20542
Transfer tip cap, RIS	G7005-20543
Transfer spring	G7005-20024
M3 setscrew (qty 2)	5181-3308

## 7250x transferline (Captive tip style with plumbing used for EI/LE-EI)



10	Spring	G1999-20023
1	Transfer tip cap	G3870-20547
4	Transfer tip base	G3870-20548
5	Xfer tip	G3870-20542
7	M3 setscrew (qty 2)	5181-3308

The 7250 spring is RoHS compliant. Its dimensions are identical to the 7200 spring.

# Transfer tip base screw orientation

With this transfer tip base (G3870-20543) installed



**Non-HES** - the knurled screws should be at 9 and 12



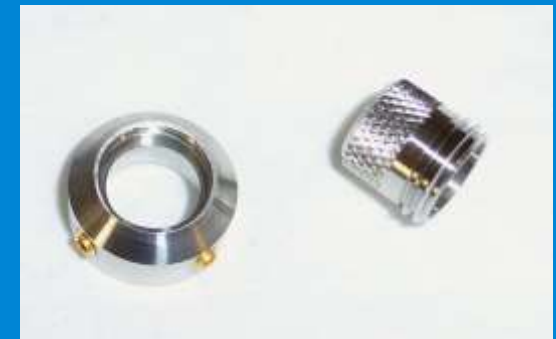
**HES** - the knurled screws should be at 12 and 3



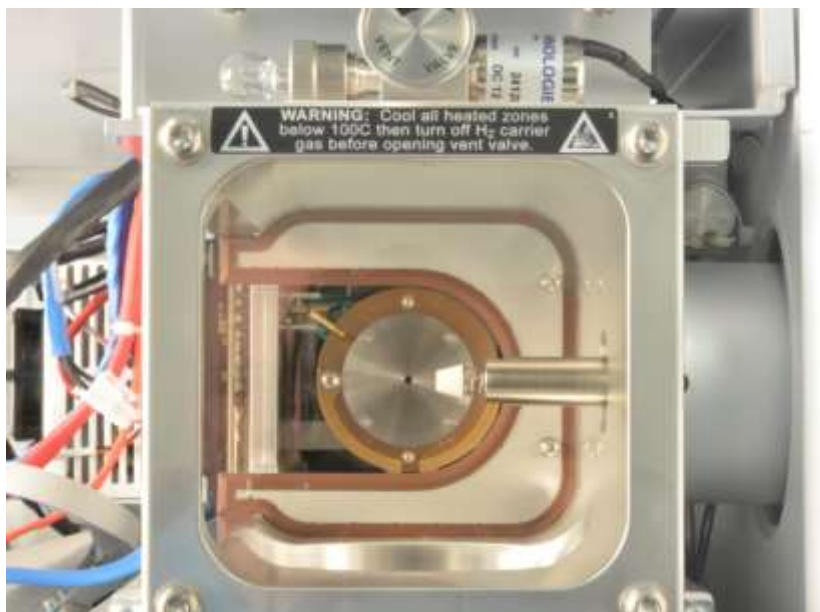
This is for HES magnet clearance



With this transfer tip base (G3870-20548) the orientation does not matter, since the set screws are recessed.



# Column Positioning



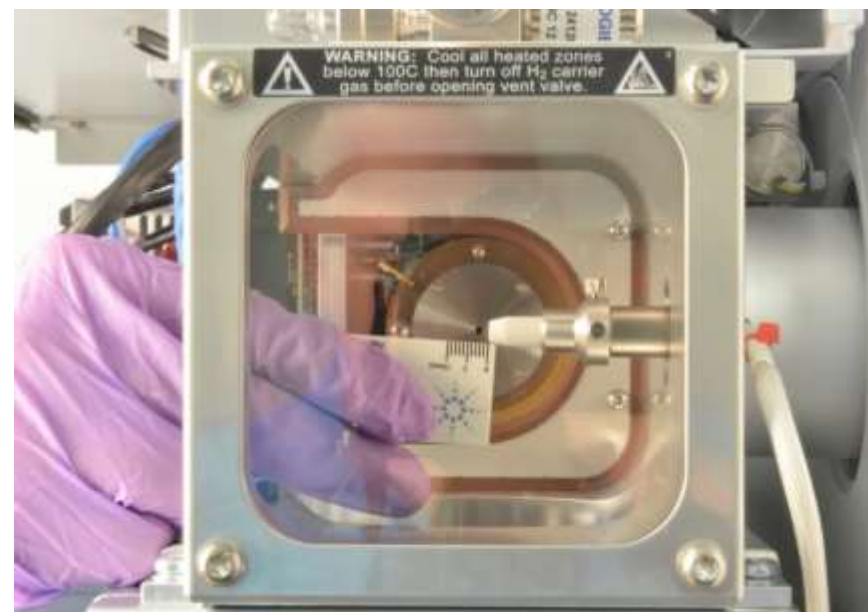
## Captive transferline:

Inert/Stainless/Extractor/CI/RIS

- Tip seal removed 2.5-3 mm exposed
- w/tip seal installed 0 mm exposed

HES/LE-EI

- Tip seal removed 4.5-5 mm exposed
- w/tip seal installed 2.5 mm exposed - maximum



## Non-captive transferline:

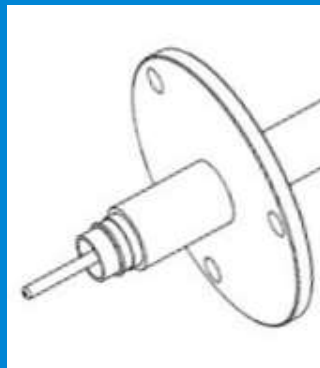
EI

- Tip seal removed
  - SS/Inert/Extractor 2.5-3mm exposed
  - HES 4.5-5 mm exposed - maximum

CI

- w/tip seal installed 1-2 mm exposed

## There are two basic types of transferlines



Captive – where the transferline tip is attached to the transferline



Non-Captive – where the transferline tip is loose

