

# SDA FAQ

For SDA A.01.02

---

## Contents

Q1. How are the access rights checked? .....	2
Q2. How to backup the database? .....	3
Q3. How to backup the database automatically by some scheduled way? .....	3
Q4. How large is the typical data size per sample? .....	3
Q5. How to backup the database? .....	3
Q6. What kind of files are uploaded to database? In what timing they are uploaded? .....	3
Q7. How to download and extract batches in database?.....	4
Q8. "MassHunter Database Viewer" ask for installation disk. Why? .....	4
Q9. Why I cannot look into database by "MassHunter Database Viewer" ? .....	5
Q10. How large is the maximum database size? .....	5
Q11. Why creation of database fails because of the error below? .....	6

**Q1. How are the access rights checked?**

A1. The following

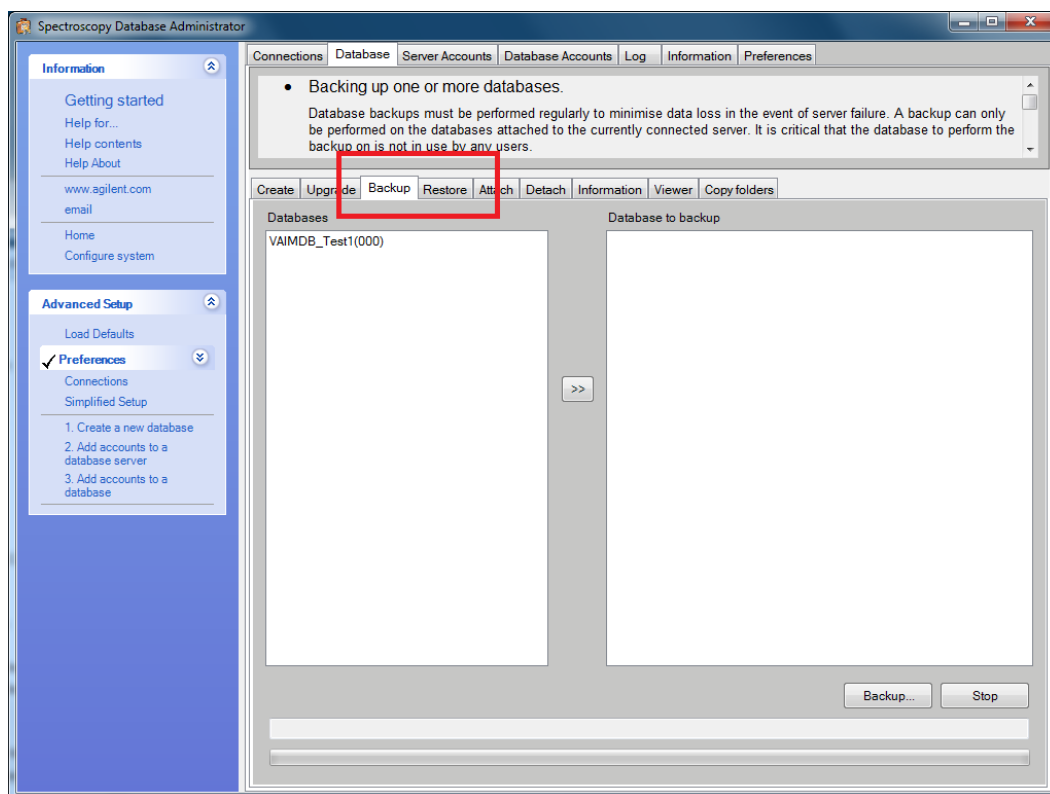
To Do	Required condition	How it is checked
Logon to MassHunter*1	To be a member of at least one of ICPMHAdmin,ICPMHManager and ICPMHOperator group.	ID and password is asked on trying to logon.
Logon to MassHunter*2	The use has been registered as user of Database	If the currently logging on user has a membership or not.
To upload/download files	To be a member of ICPMHAdmin,	ID and password is asked on trying to download / upload.
To approve files	To be a member of ICPMHSDAApprover,	ID and password is asked on trying to download / upload.
To administrate SDA (To logon to SDA administrator)	To be a member of both of SDAAdministrators group and Administrators group.	If the currently logging on user has a membership or not.
To view data in SDA viewer	The use has been registered as user of Database, in the "SDA Administrator" window.	If the currently logging on user has a membership or not.

\*1 This is checked on logging on to MassHunter always, if UAC feature is enabled on MassHunter.

\*2 This is checked adding to \*1, in case SDA integration is enabled. In the case user must satisfy both of \*1 and \*2 to logon.

## Q2. How to backup the database?

A2. It is possible using feature of SDA Administrator. See the picture below.



## Q3. How to backup the database automatically by some scheduled ways?

A3. No such a kind of feature. SDA provides only manual backup.

## Q4. How large is the typical data size per sample?

A4. It depends on the method very much and cannot speak generally. But as an example of typical case, I measured using Drinking water preset method without report generation. Then the [increase of database size] / [a data file] was 3.4 MB.

## Q5. How many users can connect the database concurrently?

A5. SDA is not a client-server system but an one-PC system. And only one user can connect the database at once.

## Q6. What kind of files are uploaded to database? In what timing they are uploaded?

A6. Please refer to appendix C in "ICP-MS (7900/8800/7700) MassHunter Workstation User Access Control Pack manual".

<http://intranet.chem.agilent.com/Library/usermanuals/Entitled%20Partner/G7207-90005.pdf>

Q7. How to download and extract batches in database?

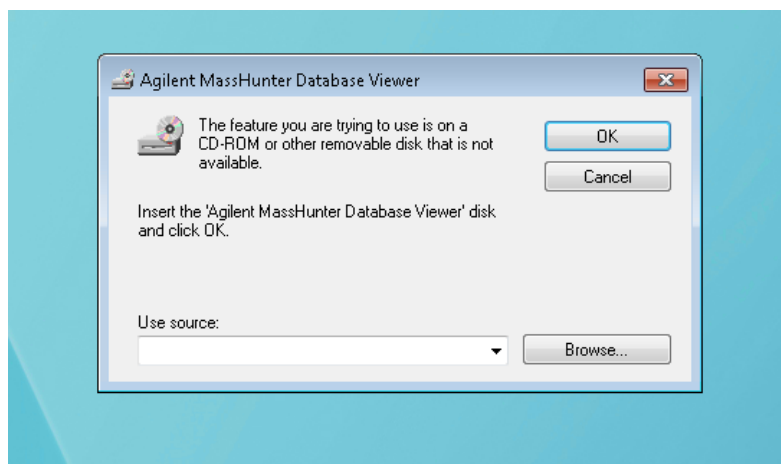
A7. Use "Database Utility". For detail, please refer to appendix D in in "ICP-MS (7900/8800/7700) MassHunter Workstation User Access Control Pack manual".

<http://intranet.chem.agilent.com/Library/usermanuals/Entitled%20Partner/G7207-90005.pdf>

In case MassHunter B.01.02, it has no "Database Utility" feature mentioned in the manual above. In case, please use restore ssizip menu in DA..

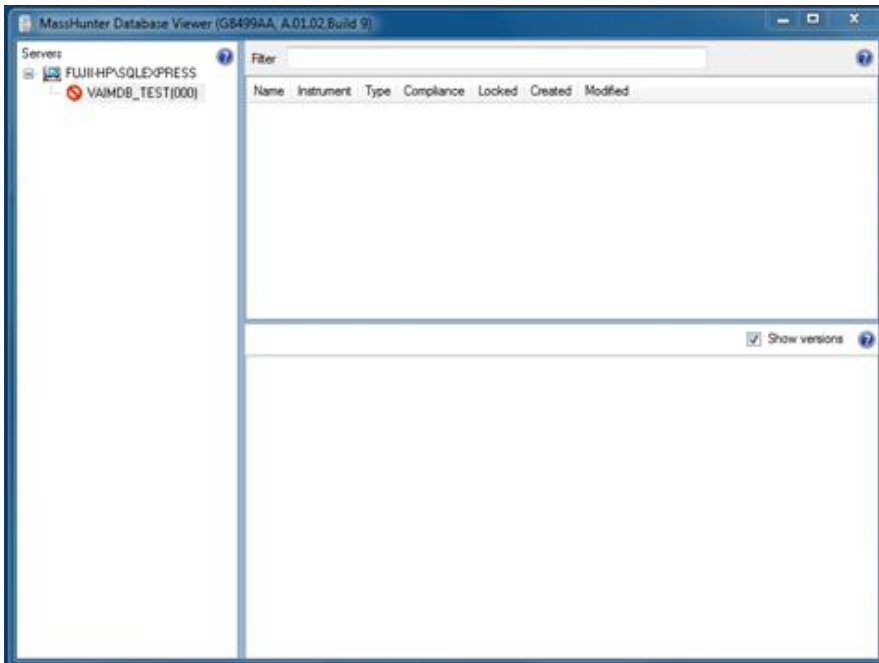
Q8. The "MassHunter Database Viewer" ask for installation disk. Why?

A8. It is displayed when a user, other than the one who installed SDA, try to open the Agilent MassHunter Database Viewer first time. As the message requires, insert installation disk of SDA and press OK. Then it will not be displayed from the next time.



Q9. Why I cannot look into database by "MassHunter Database Viewer" ?

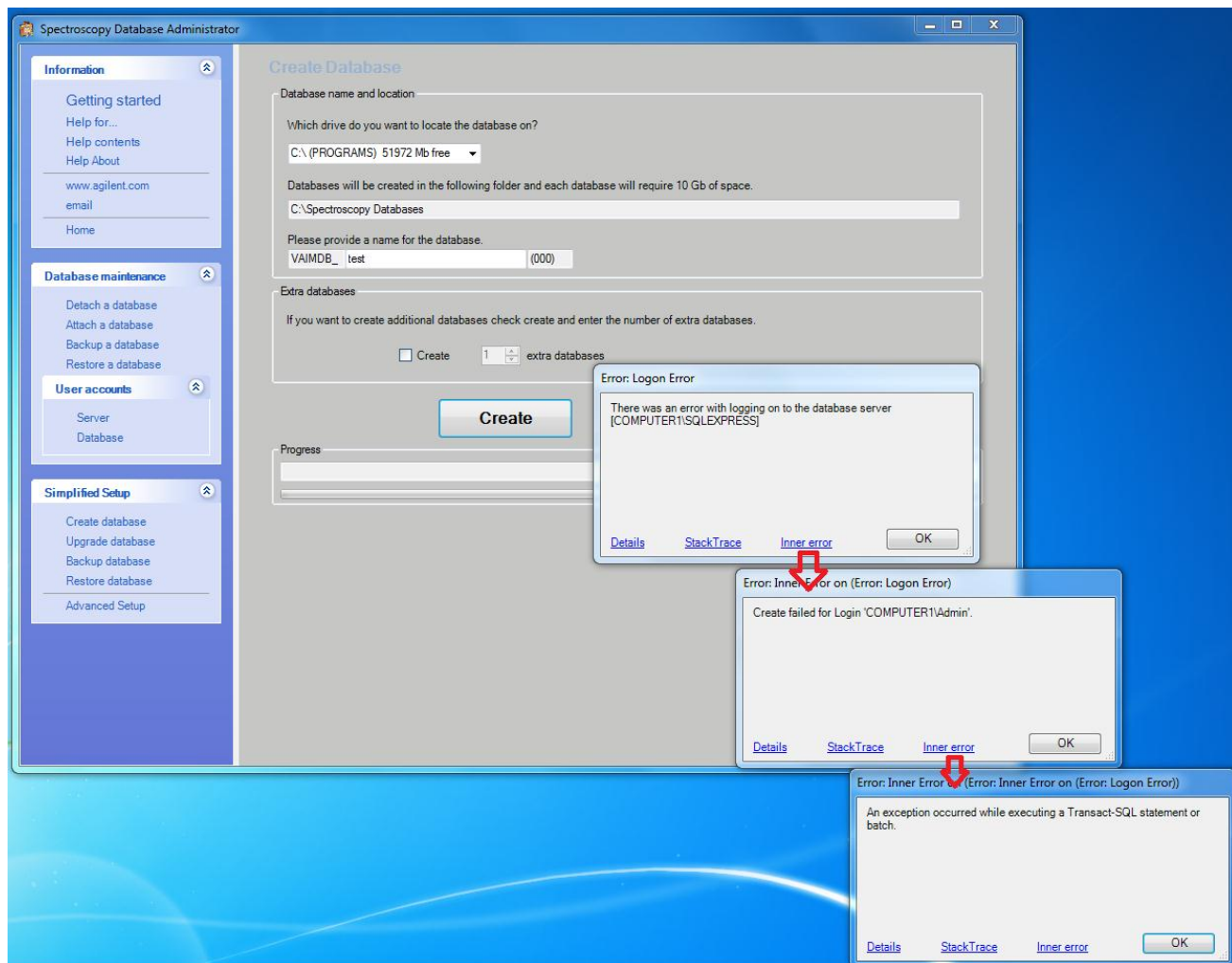
A9. It's because you have no access rights for database. Ask Administrator of SDA for add you as a user of database.



Q10. How large is the maximum database size?

A10. Maximum value on software is 1000000MB. But actually limited by hard disk size.

Q11. Why creation of database fails because of the error below?



A11. Computer name would have been changed after the installation of the SDA. Software does not allow that operation. To fix this, re-installation of SDA is required.

This information is subject to change without notice

© Agilent Technologies, Inc. 2014

Published in Japan, 12-June-2014