

# US EPA Tune Check Report

**Operator Name** labceuser  
**Acq/Data Batch** D:\Agilent\ICPMH\1\DATA\2020\EPA\_2008\Maintenance\October\_2020\Tune\_post maintenance 20201026.b  
**Acq. Date-Time** 2020-10-26 11:13:12  
**Report Comment** 2008 Tune  
**Instrument Name** G8421A SG18463470

[no gas]

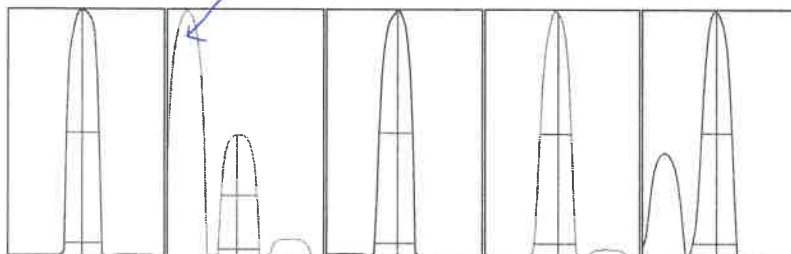
**Sensitivity**

Mass	Conc. [ug/l]	Count	CPS	Resp (Required) [cps/ug/l]	Resp (Flag)	RSD%	RSD% (Required)
9	10.00	5052	50519.47			4.091	5.000
24	10.00	21530	215296.47			3.156	5.000
59	10.00	86694	866935.64			3.152	5.000
115	10.00	64778	647784.49			3.214	5.000
208	10.00	32171	321709.48			3.109	5.000

Mass	RSD% (Flag)
9	
24	
59	
115	
208	

Integration Time [sec] 0.1

**Resolution/Axis**



Mass	Peak Height	Axis	Axis (Required)	Axis (Flag)
9	5034.12	8.95	8.90 - 9.10	
24	21720.41	23.85	23.90 - 24.10	Fail
59	89605.24	58.90	58.90 - 59.10	
115	66298.70	114.95	114.90 - 115.10	
208	32479.63	207.95	207.90 - 208.10	

Mass	W-50%	W-5%	W-5% (Required)	W-5% (Flag)
9	0.64	0.741	0.900	
24	0.68	0.790	0.900	
59	0.65	0.786	0.900	
115	0.60	0.814	0.900	