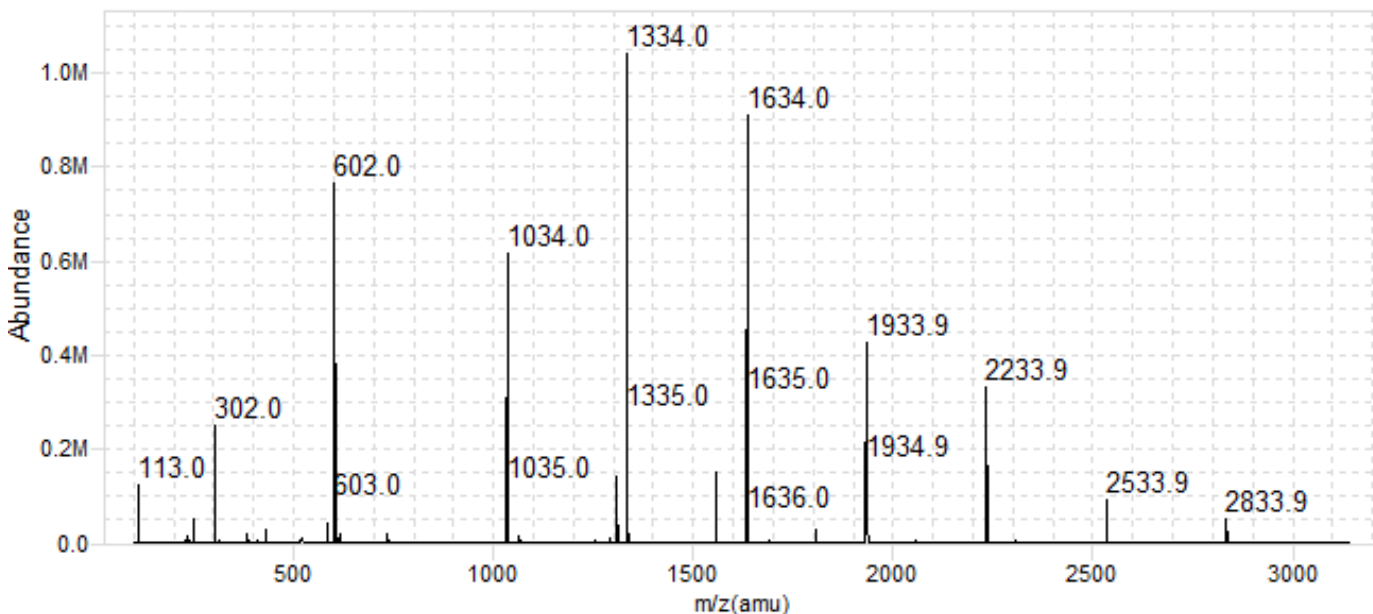
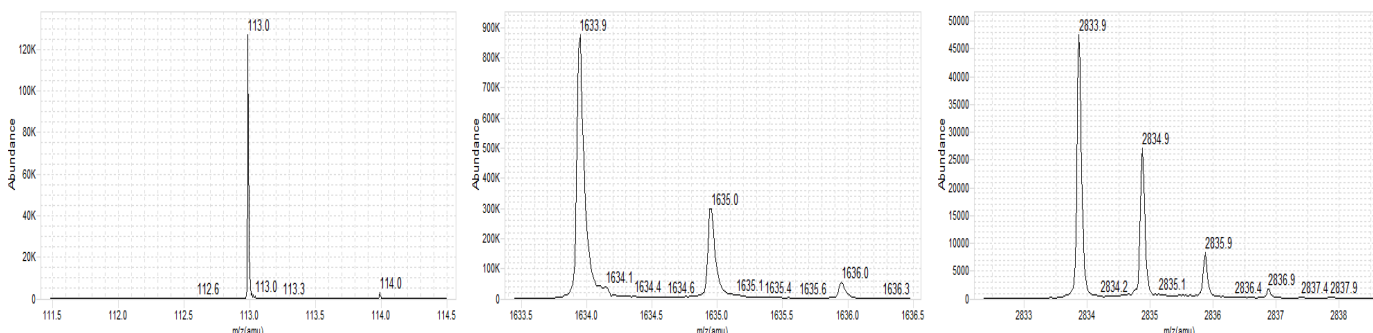


Instrument Information

MS Model	G6550A	Run Date	10:27:19 11:26:35
Serial Number	SG1334B001	Firmware Rev	14.663
Instrument Mode	Extended Dynamic Range (2GHz)	Slicer Mode	High Resolution (Position: 8)
Mass Range	Standard (3200 m/z)	Source Type	Dual AJS ESI
Ion Polarity	Negative		
Data Path	D:\MassHunter\Tune\QTOF\Autotune.tun		

Negative Polarity Results

TOF Results



TOF Mass Calibration Data

Theoretical	Actual	Time	Abundance	Resolution	FWHM	Delta(m/z)	Corrected Residuals
112.985587	112.985592	31.757525	125266	13665	0.0085	0.000005	0.05
301.998139	301.998112	51.278234	258427	20303	0.0152	-0.000027	-0.09
601.978977	601.979031	71.980726	775711	24829	0.0246	0.000054	0.09
1033.988109	1033.988094	94.023305	637292	28496	0.0367	-0.000015	-0.01
1333.968947	1333.968807	106.657574	1034140	30023	0.0449	-0.00014	-0.11
1633.949786	1633.949922	117.934477	899610	31066	0.053	0.000136	0.08
1933.930624	1933.9308	128.215523	419302	32375	0.0602	0.000176	0.09
2233.911463	2233.911106	137.725588	315578	33270	0.0676	-0.000357	-0.16
2533.892301	2533.892512	146.61587	88378	35917	0.071	0.000211	0.08
2833.873139	2833.873096	154.993629	48136	38055	0.075	-0.000043	-0.02

Setpoints

Source Settings			
Gas Temperature	225	Drying Gas	13.0
Nebulizer Pressures	20	Capillary	3500
Sheath Gas Temperature	225	Sheath Gas Flow	12.0
Nozzle Voltage	2000		
Source Actuals			
Gas Temperature	225	Drying Gas	13.0
Nebulizer Pressures	20	Capillary	3500
Cap Current	5.827	Chamber Current	5.49
Ion Funnel			
Funnel DC	50.0	HP Funnel dV	150.0
HP Funnel RF	200.0	LP Funnel dV	100.0
LP Funnel RF	100.0		
Quad			
TTI Quad AMU	112.0	Quad DC	-22.4
Post Filter DC	-22.4		
Cell			
Collision Cell Gas Flow	22.0	Hex RF	550
Hex DC	-20.4	Hex Delta	7.0
Cell Entrance	-21.4	Hex 2 RF	600
Hex 2 DC	-13.4	Hex 2 DV	1.0
Optics 2			
Ion Focus	-10.0	Extractor DC	15.0
Lens 3	59.5	Bottom Slit	41.30
Top Slit	42.00	Hex 3 DC	-11.8
TOF			
Pusher	-1200	Pusher Offset	0
Puller	700	Puller Offset	-24
Acc Focus	1950	Front Mirror	7000
Mid Mirror	1674.5	Back Mirror	-1250
Minimum Mass	100	Maximum Mass	3200
Acquisition Rate	1.0	Acquisition Time	1000
Length of Transients	286736	#Transients / Spectrum	5904
Acq Hold Off Delay (ns)	20000		
Detector			
MCP	859	PreAmpOffset	30509
Low Gain PreAmpOffset	33286	Gain Abund Ratio	12.0
Gain T0 Offset	-0.088		
Vacuum And Temperatures			
Quad Temp	100	Rough Vac	2.83E+00
Quad Vac	4.94E-05	TOF Vac	1.98E-07
Turbo 1 Speed	100.0	Turbo 1 Power	141
Turbo 2 Speed	100.0	Turbo 2 Power	36

TOF Mass Calibration Coefficients

a	3457.154E-04	t0	1011.220E-03	a2	1470.867E-12
b2	-8745.285E-14	c2	1807.108E-15	d2	-1634.436E-17
e2	5891.759E-20	f2	-3232.762E-25	Term Flag	0x05F0
Trad	1	Poly	6		