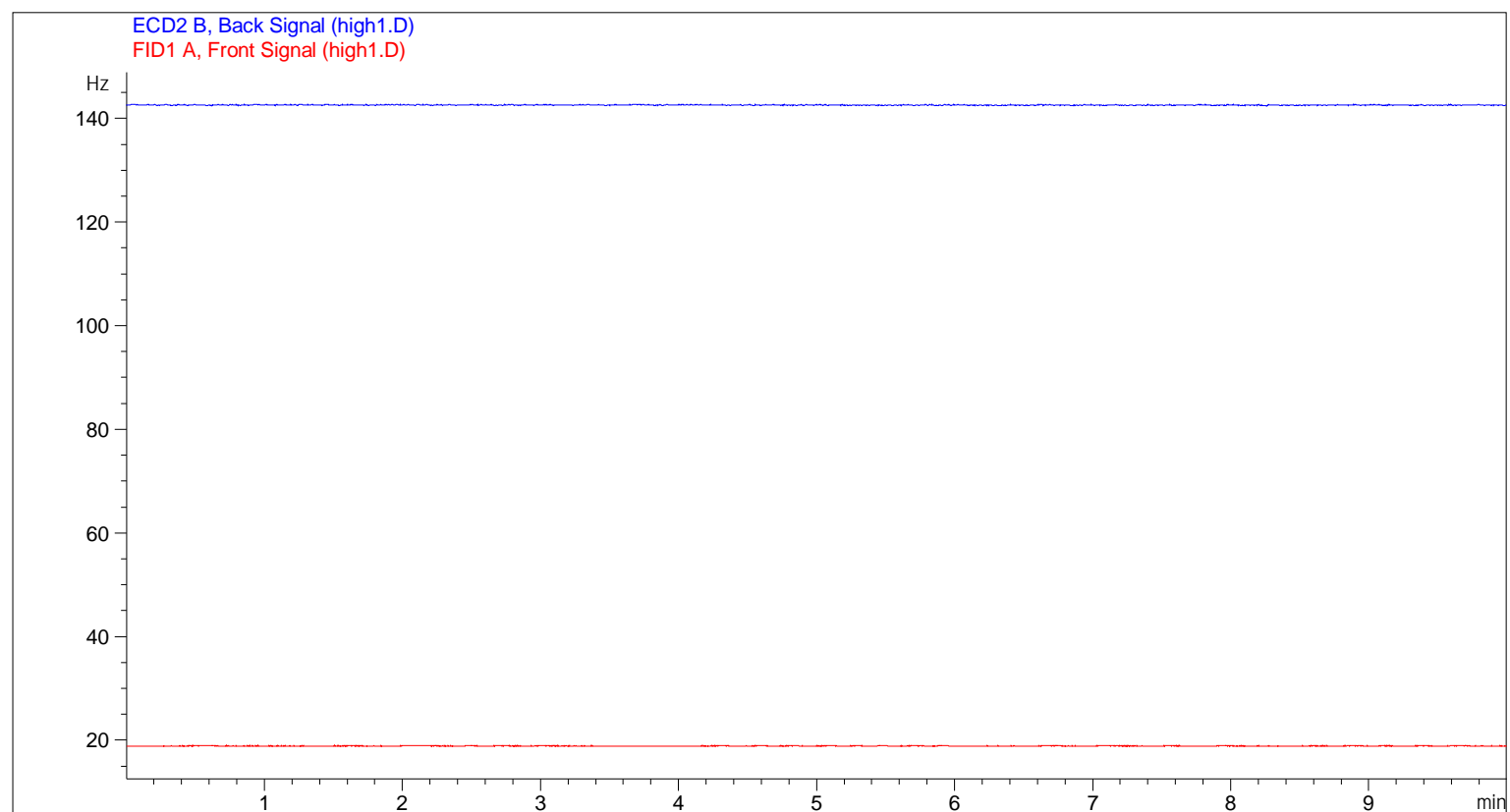


Sample Name: hi gh1

```

=====
Acq. Operator   : SYSTEM                      Seq. Line :    2
Acq. Instrument : GHG                      Location  :    2 (F)
Injection Date  : 18/12/2018 12:15:20 PM      Inj       :    1
                                           Inj Volume: 0 µl
Sequence File   : C:\Chem32\1\Data\2016\Fei ke\Mi che l l e2 Dec 2018 2018-12-18 11-58-56
                  \Mi che l l e2 Dec 2018.S
Method          : C:\Chem32\1\Data\2016\Fei ke\Mi che l l e2 Dec 2018 2018-12-18 11-58-56\7890-
                  0505 HS Samples_unsaved changes.M (Sequence Method)
Last changed    : 18/12/2018 11:58:56 AM by SYSTEM
Method Info     : makeup gas for ECD changed from N2 to ArMe on 22nd June 2016
=====

```



```

=====
External Standard Report
=====

```

```

Sorted By      :      Signal
Calib. Data Modified :      4/12/2015 3:05:02 PM
Multiplier     :      1.0000
Dilution       :      1.0000
Do not use Multiplier & Dilution Factor with ISTDs

```

Signal 1: ECD2 B, Back Signal

RetTime [min]	Type	Area [Hz*s]	Amt/Area	Amount [ppm]	Grp	Name
6.680	-	-	-	-	-	Ni trous Oxide

Totals : 0.00000

Signal 2: FID1 A, Front Signal

RetTime [min]	Type	Area [pA*s]	Amt/Area	Amount [ppm]	Grp	Name
3.107		-	-	-		Methane
5.268		-	-	-		Carbon Di oxide

Totals : 0.00000

1 Warnings or Errors :

Warning : Calibrated compound(s) not found

=====
=====
Area Percent Report
=====

Sorted By : Signal
Calib. Data Modified : 4/12/2015 3:05:02 PM
Multiplier : 1.0000
Dilution : 1.0000
Do not use Multiplier & Dilution Factor with ISTDs

Signal 1: ECD2 B, Back Signal

Peak #	RetTime [min]	Type	Width [min]	Area [Hz*s]	Area %	Name
1	6.680		0.0000	0.00000	0.00000	Nitrous Oxide

Totals : 0.00000

Signal 2: FID1 A, Front Signal

Peak #	RetTime [min]	Type	Width [min]	Area [pA*s]	Area %	Name
1	3.107		0.0000	0.00000	0.00000	Methane
2	5.268		0.0000	0.00000	0.00000	Carbon Di oxide

Totals : 0.00000

1 Warnings or Errors :

Warning : Calibrated compound(s) not found

=====
*** End of Report ***