

8890 Gas Chromatograph (GC) System with 7693A Automatic Liquid Sampler

Standard Configuration + Featured Supplies = Better Customer Experience

Automatic Liquid Sampler

- 5181-1267: Syringe, 10 μ L Tapered, FN 23-26s/42/HP
- 07673-40180: Diffusion Caps for 4 mL Vials, 12/PK

Inlet











- 5183-4757: Septa Non-Stick BTO Inlet 11 mm 50/PK
- 5188-5365: Liner O-Ring, Non-Stick 10/PK
- 5190-3165: Inlet Liner, Ultra Inert, Split, Low Pressure Drop, Glass Wool, 5/PK
- 5181-3323: Ferrule, 0.4 mm VG 0.1-0.25 col 10/PK
- 5080-8853: Ferrule, 0.5 mm Graphite 0.32 col 10/PK
- G3440-81011: Column Nut, Collared, Self-Tightening, Inlet/Detector
- 5188-5367: Gold Plated Inlet Seal with Washer



Detector

- 5200-0176: FID Jet, Universal Fit, 0.011 inch ID
- G3440-81011: Column Nut, Collared, Self-Tightening, Inlet/Detector
- 5181-3323: Ferrule, 0.4 mm VG 0.1-0.25 col 10/PK
- 5080-8853: Ferrule, 0.5 mm Graphite 0.32 col 10/PK

General GC Workflow Supplies Recommendations (8890/8860 GC)

PN	Description	1st Purchasing Quantity Recommendation	Reasoning and Selling Points	Product Family
G3440-81011	Column Nut, Collared, Self-Tightening, Inlet/Detector	2 (1 for inlet and 1 for detector)	Improved flow path connections as well as ease of use during column installation (2019 New Product)	Column nuts 
5200-0176	FID Jet, Universal Fit, 0.011 inch ID	1	Our new universal jets are designed for capillary and packed column compatibility. They're designed to prevent thread galling and enhance ease of installation (2019 New Product)	FID Jet 
5188-5367	Gold Plated Inlet Seal with Washer	1	Agilent Gold seals are manufactured using a patented process that eliminates microleaks from negatively impacting performance. Inlet seal required for SSI and MMI injection ports (95%).	Gold seal 
5181-1267	Syringe, 10 µL Tapered, FN 23-26s/42/HP	1	Standard syringe for customers looking for economical purchases	Syringes 
5183-4757	Septa Non-Stick BTO Inlet 11 mm 50/PK	1	BTO septa are optimized to reduce septum bleed at a higher range of temperatures; maximum inlet temperature can reach 400°C	Septa 
5190-3165	Inlet Liner, Ultra Inert, Split, Low Pressure Drop, Glass Wool, 5/PK	1	General use liner that provides high performance for various applications	Liners 
5188-5365	Liner O-Ring, Non-Stick 10/PK	1	Required to make inlet/detector leak-free connections, especially for MSD	Liner o-rings 
5181-3323	Ferrule, 0.4 mm VG 0.1-0.25 col 10/PK	1	Required to make inlet/detector connections, especially for MSD. Additional sized ferrules available depending on columns required	Ferrules 
5080-8853	Ferrule, 0.5 mm Graphite 0.32 col 10/PK	1	Graphite ferrules can be used on FID, ECD and other non-MSD detectors. Their inherent softness and thermal expansion properties help to prevent against column damage due to overtightening while maintaining a leak-free seal throughout temperature cycling	Ferrules 
07673-40180	Diffusion Caps for 4 mL Vials, 12/PK	1	This helps prevent solvent from evaporating while sitting in the vial in the autosampler tray. Customers tend to forget to replace or even purchase diffusion caps	Diffusion caps for wash vials 

Learn more:

<https://www.agilent.com/en/promotions/better-gc-connections>

This information is subject to change without notice.

Intuvo 9000 Gas Chromatography (GC)/ 5977B Single Quadrupole GC/MS systems with 7693A Automatic Liquid Sampler

Improve Customer Satisfaction via Featured Supplies Recommendation

Automatic Liquid Sampler

- 5181-1267: Syringe, 10 μ L Tapered, FN 23-26s/42/HP
- G4513-80204: ALS Syringe, Blue Line, 10 μ L, Fixed Needle, 23-26s/42/Cone
- 07673-40180: Diffusion Caps for 4 mL Vials, 12/PK

5977B Single Quadrupole MSD

- G3440-81013: Column Nut, Collared, Self-Tightening, MSD Transfer Line
- G7005-60061: Filament, High Temperature, EI Ion Source
- G7002-60001: High Efficiency Source Filaments

Rough Pump Consumables and Tools

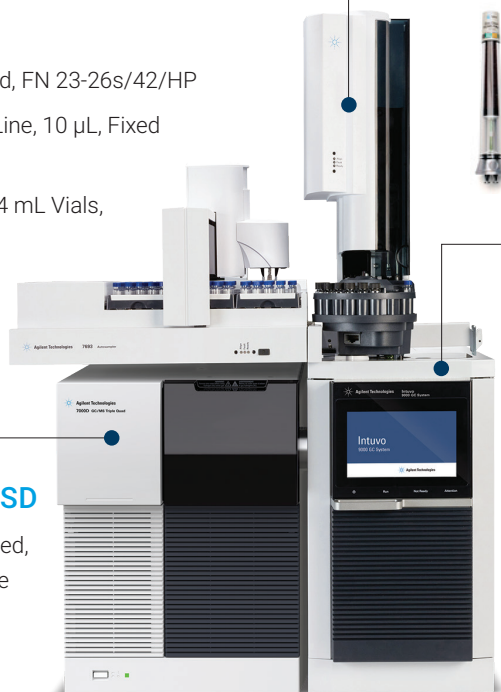
- 5191-5851: AVF 45 Platinum, 1 Liter
- G7077-67018: IDP3 Tip Seal Maintenance Kit, Includes Tip Seal, Silencer Filter Element, Face Mask, Lint Free Cloth, Gloves, and Hex Keys

Gas Management

- CP17973: Carrier Gas GasClean Filter
- RMSH-2: Big Universal Trap, Helium, 1/8 in, 250 psig

Intuvo 9000 GC

- 5190-5112-005: Ultra Inert Splitless Single Taper with Frit Liner
- 5188-5365: Liner O-Ring, Non-Stick 10/PK
- 5200-0176: FID Jet, Universal Fit, 0.011 inch ID
- 5190-9072: Intuvo Polyimide Gaskets 5/PK
- 5190-9073: Intuvo Nickel Gaskets 2/PK
- G4587-60565: Intuvo Split/Splitless Inlet Guard Chip 2/PK
- G4587-60575: Intuvo Split/Splitless Inlet Jumper Chip
- G4581-60260: Intuvo Compression Bolt
- 8710-2790: Screw Driver, Torque, Preset Adjustable



Intuvo 9000 GC Workflow Supplies Recommendations

Intuvo Specific	Description	1st Purchasing Quantity Recommendation	Reasoning and Selling Points	Product Family
5190-9072	Intuvo Polyimide Gaskets 5/PK	1	Gaskets are required to make connections in Intuvo flow path	Intuvo specific 
5190-9073	Intuvo Nickel Gaskets 2/PK	2	For use with high temperature applications (e.g. 400°C)	Intuvo specific 
G4587-60565	Intuvo Split/Splitless Inlet Guard Chip 2/PK	1	Guard chip for "dirty samples" to help protect the specialized Intuvo columns. The guard chip acts like a combination of the gold seal + guard column to protect the analytical column from dirty samples	Intuvo specific 
G4587-60575	Intuvo Split/Splitless Inlet Jumper Chip	1	For use with clean samples only	Intuvo specific 
G4581-60260	Intuvo Compression Bolt	4	Recommended to have extras on-hand in case the ones installed are dropped/lost	Intuvo specific 
8710-2790	Screw Driver, Torque, Preset Adjustable	1	Uniquely designed for specific use with the Intuvo compression bolts	Intuvo specific 
General GC Workflow				
5183-4757	Septa Non-Stick BTO Inlet 11mm 50/PK	1	BTO septa are optimized to reduce septum bleed at a higher range of temperatures; maximum inlet temperature can reach 400°C	Septa 
5181-1267	Syringe, 10 µL Tapered, FN 23-26s/42/HP	1	Standard syringe for customers looking for economical purchases	Syringes 
G4513-80204	ALS syringe, Blue Line, 10 µL, Fixed Needle, 23-26s/42/Cone	1	Standard syringe for customers looking for high performance	Syringes 
5190-3165	Inlet Liner, Ultra Inert, Split, Low Pressure Drop, Glass Wool, 5/PK	1	General use liner that provides high performance for various applications	Liners 
5190-5112-005	Ultra Inert Splitless Single Taper with Frit Liner	1	Glass-fritted liners help provide more consistent results and improved reproducibility. GC/MS users more commonly run splitless applications. (2019 New Product)	Liners 
5200-0176	FID Jet, Universal Fit, 0.011 inch ID	1	Our new universal jets are designed for capillary and packed column compatibility. They're designed to prevent thread galling and enhance ease of installation. (2019 New Product)	FID Jet 
5188-5365	Liner O-Ring, Non-Stick 10/PK	1	Liner o-rings for users who purchase 100 packs of liners (non-Touchless packaged liners)	Liner o-rings 
07673-40180	Diffusion Caps for 4 mL Vials, 12/PK	1	This helps prevent solvent from evaporating while sitting in the vial in the autosampler tray. Customers tend to forget to replace or even purchase diffusion caps.	Diffusion caps for wash vials 
Inlet and FID detector designs are practically identical for Intuvo 9000 and 8890/8860 GCs. Therefore, the liners, septa, FID jet and syringes that are suggested in GC and/or GC/MS analysis are valid for Intuvo 9000 GC.				

Learn more:

<https://www.agilent.com/en/promotions/better-gc-connections>

This information is subject to change without notice.

8890 Gas Chromatography (GC)/ 7000D Triple Quadrupole GC/MS systems with 7693A Automatic Liquid Sampler

Provide Peace of Mind to the Customer with Featured Supplies Recommended by Agilent Product Managers

Automatic Liquid Sampler

- 5181-1267: Syringe, 10 μ L Tapered, FN 23-26s/42/HP
- G4513-80204: ALS Syringe, Blue Line, 10 μ L, Fixed Needle, 23-26s/42/Cone
- 07673-40180: Diffusion Caps for 4 mL Vials, 12/PK

Gas Management

- CP17973: Carrier Gas GasClean Filter
- RMSH-2: Big Universal Trap, Helium, 1/8 in, 250 psig

8890GC Non-MSD Detector

- 5200-0176: FID Jet, Universal Fit, 0.011 inch ID
- G3440-81011: Column Nut, Collared, Self-Tightening, Inlet/Detector
- 5181-3323: Ferrule, 0.4 mm VG 0.1-0.25 col 10/PK
- 5080-8853: Ferrule, 0.5 mm Graphite 0.32 col 10/PK

7000D QQQ MSD

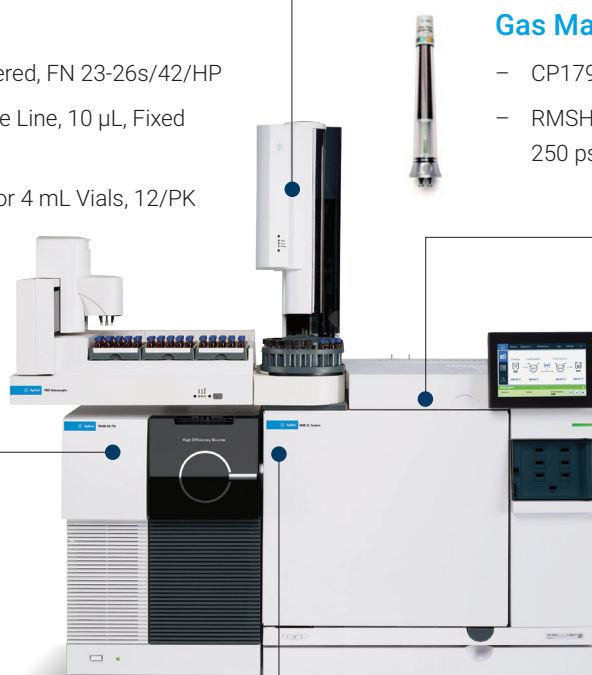
- G3440-81013: column Nut, Collared, Self-Tightening, MSD Transfer Line
- G7005-60061: Filament, High Temperature, EI Ion Source

Rough Pump Consumables and Tools







- 5191-5851: AVF 45 Platinum, 1 Liter
- G7004-67026: Tip Seal Kit, IDP-10, Includes Tip Seals, Tools, Cloth, Swab, Face Mask, Nylon Gloves, Filter Element, and a Manual.

8890GC Inlet

- 5183-4757: Septa Non-Stick BTO Inlet 11 mm 50/PK
- 5188-5365: Liner O-Ring, Non-Stick 10/PK
- 5190-3165: Inlet Liner, Ultra Inert, Split, Low Pressure Drop, Glass Wool, 5/PK
- 5080-8853: Ferrule, 0.5 mm Graphite 0.32 col 10/PK
- 5181-3323: Ferrule, 0.4 mm VG 0.1-0.25 col 10/PK
- G3440-81011: Column Nut, Collared, Self-Tightening, Inlet/Detector
- 5188-5367: Gold Plated Inlet Seal with Washer



General GC/MS Workflow (5977B/7000D/7010B) Supplies Recommendations

PN	Description	1st Purchasing Quantity Recommendation	Reasoning and Selling Points	Product Family
G3440-81013	Column Nut, Collared, Self-Tightening, MSD Transfer Line	1	Improved flow path connections as well as ease of use during column installation (2019 New Product)	Column nuts 
5181-3323	Ferrule, 0.4 mm VG 0.1-0.25 col 10/PK	1	Required to make inlet/detector connections. Additional sized ferrules available depending on columns required	Ferrules 
G7005-60061	Filament, High Temperature, EI Ion Source	2	5977, 5975, 7000 MS filament. For non HES sources (5977A or B - InertPlus, Inert, Extractor, stainless steel, 5975, or 5973)	Filament 
G7002-60001	High Efficiency Source Filaments	1	Only for 5977B High Efficiency Source HES and 7010B High efficiency source MS systems	Filament
5190-5112-005	Ultra Inert Splitless Single Taper with Frit Liner	1	Glass-fritted liners help provide more consistent results and improved reproducibility. GC/MS users more commonly run splitless applications (2019 New Product)	Liners 
CP17973	Carrier Gas GasClean Filter	1	GC/MS requires clean carrier gas for ideal operation (has indicators)	Gas Management 
RMSH-2	Big Universal Trap, Helium, 1/8 in, 250 psig	1	Large capacity filter (but doesn't have indicator)	Gas Management 
5191-5851	AVF 45 Platinum, 1 Liter	1	Oil for rough pump maintenance (for oil pumps only), PN 6040-0834 is set for obsolescence in the near the future.	Rough pump consumables (related to MSDs)
G7004-67026	Tip Seal Kit, IDP-10, Includes Tip Seals, Tools, Cloth, Swab, Face Mask, Nylon Gloves, Filter Element, and a Manual.	1	For IDP-10 (dry) scroll pumps only (usually sold with Triple quad MSDs)	Rough pump consumables (related to MSDs)
G7077-67018	IDP3 Tip Seal Maintenance Kit, Includes Tip Seal, Silencer Filter Element, Face Mask, Lint Free Cloth, Gloves, and Hex Keys	1	For IDP-3 (dry) scroll pumps only (usually sold with single quad MSDs)	Rough pump consumables (related to MSDs)

Learn more:

<https://www.agilent.com/en/promotions/better-gc-connections>

This information is subject to change without notice.