

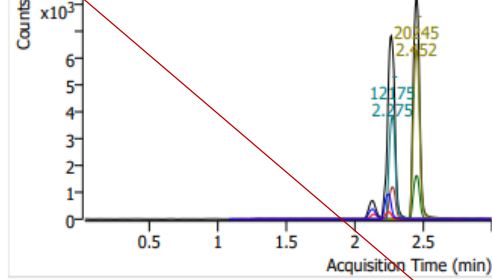
Chromatograms



Trusted Answers

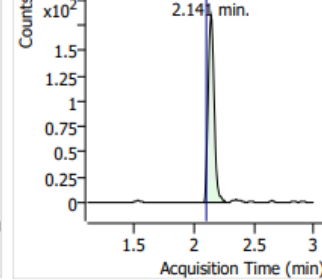
CMAMCal_L1.d

+ TIC MRM (** -> **) CMAMCal_L1.d (Calib-L1)



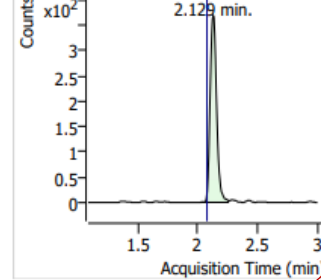
Amp

+ MRM (136.2 -> 91.4) CMAMCal_L1.d



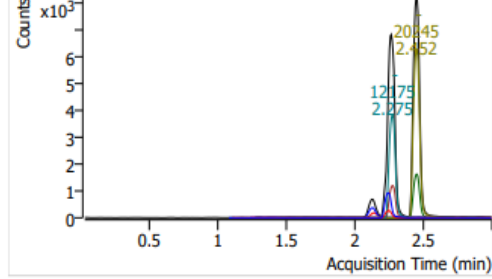
ISTD

+ MRM (141.1 -> 93.4) CMAMCal_L1.d



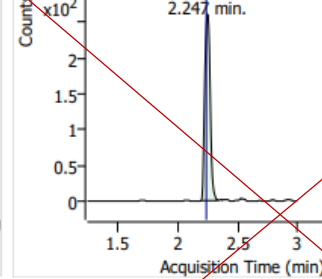
CMAMCal_L1.d

+ TIC MRM (** -> **) CMAMCal_L1.d (Calib-L1)



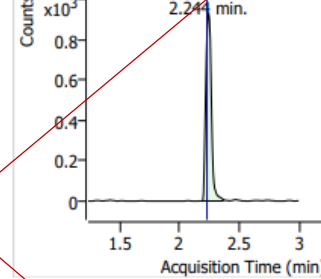
Meth

+ MRM (150.1 -> 119.3) CMAMCal_L1.d



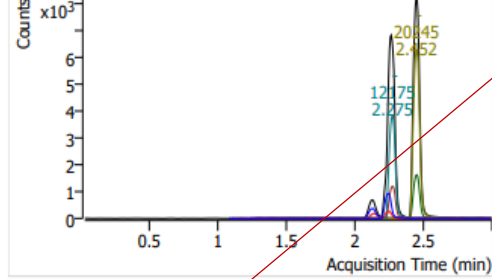
ISTD

+ MRM (155.1 -> 92.3) CMAMCal_L1.d



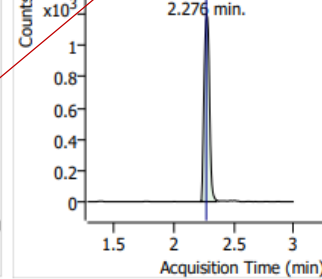
CMAMCal_L1.d

+ TIC MRM (** -> **) CMAMCal_L1.d (Calib-L1)



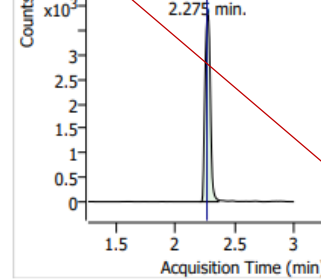
MDMA

+ MRM (194.2 -> 163.2) CMAMCal_L1.d



ISTD

+ MRM (199.2 -> 164.3) CMAMCal_L1.d



CMAMCal_L1.d

Cocaine

ISTD

